

# VISION

Create well oriented organization to fulfill global market needs

# MISSION

- Use and follow the latest technological methods and designs to increase our capability
- Provide and maintain infrastructure needed to achieve conformity to product requirements and suitable environment for employees
- Provide products and services with high quality and competitive price to achieve customer satisfaction and loyalty.
- strive to reflect the highest ethical standards in our relationships with our employees, providers and top management.



# ABSTRACT

## SUEZ FOR INDUSTRIAL COMPONENTS

**SiC** S.A.E is a company that produces components for household cooking appliances. Founded in 2020, which starts to manufactures main components like; (Venturi burners, Oven door hinges and Turnspit)...

Now we can classify our products into more than 70 models under at least 2 series of each product sourced by 5 product family.

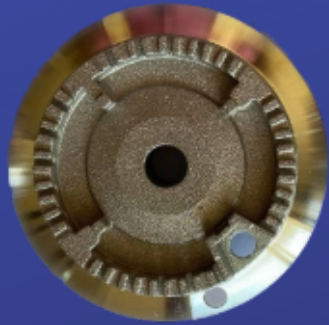
# Product Portfolio

# 1- Gas components & Aluminum Parts

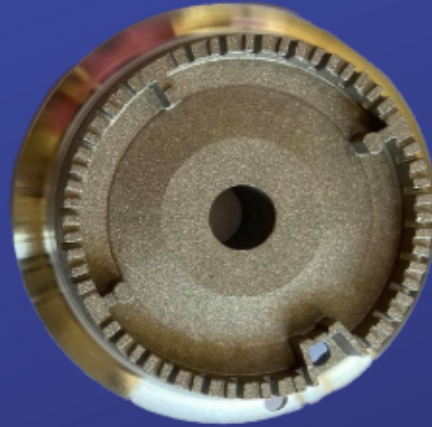
## 1.1- SABAF Burner Crown set



Auxiliary Crown



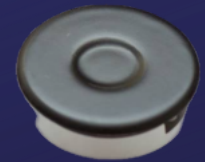
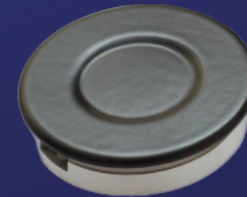
Semi-rapid Crown



RapidCrown



**Skirt Burner Crown set with Lid**



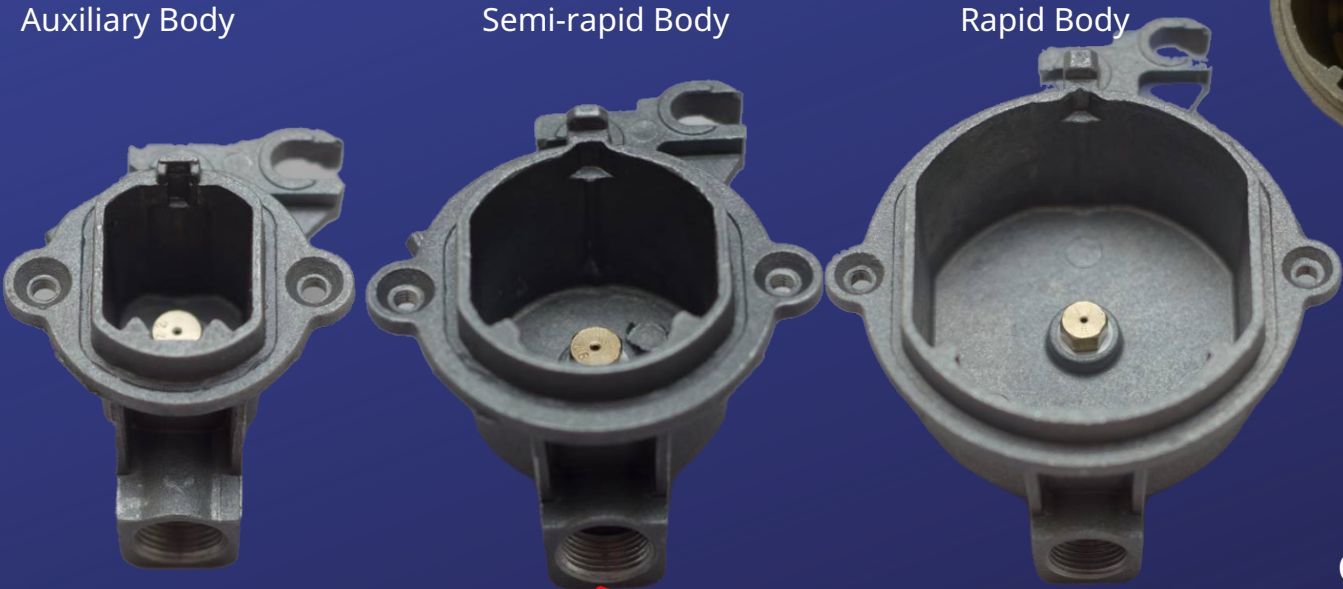
**Cylinder Burner Crown set with Lid**



**Burner Crown set**  
(Venturi Fixation)



1.2- SABAF Burner Body set



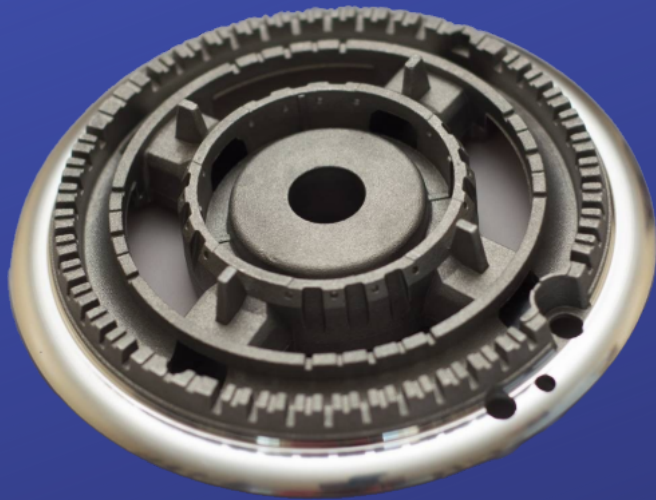
**Burner Body set**

Cups is tested with computerized **Assembly & Testing machine** that has three station of testing (Linearity, Flow rate & Leakage values)



Gas inlet threading referred to (Customized)

### 1.3- SABAF Triple Burner set



Skirt Triple Crown



Cylinder Triple Crown

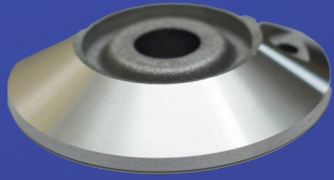


Triple Burner Body

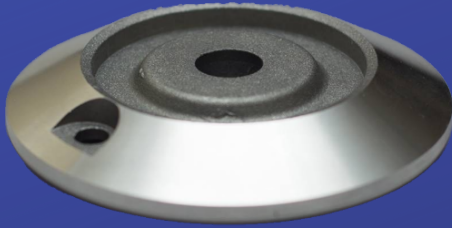


Assembly Triple Burner set

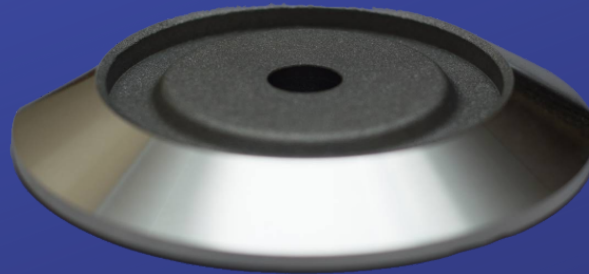
## 1.4- Flat Burner set



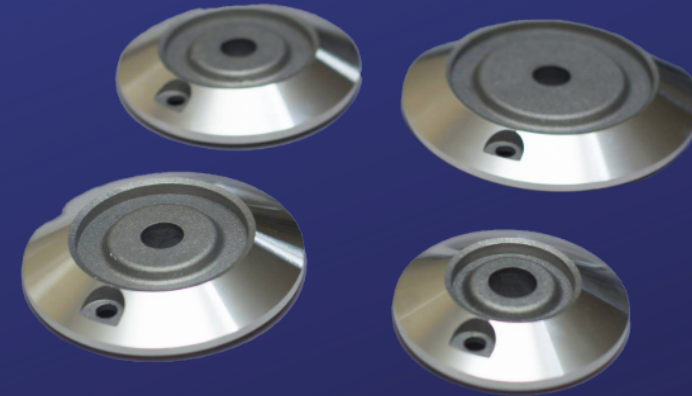
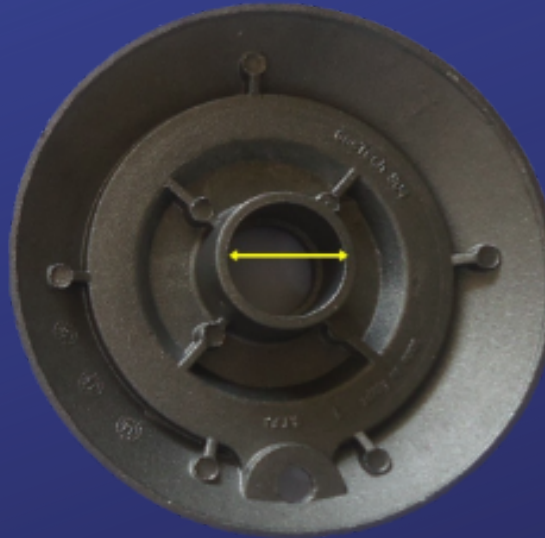
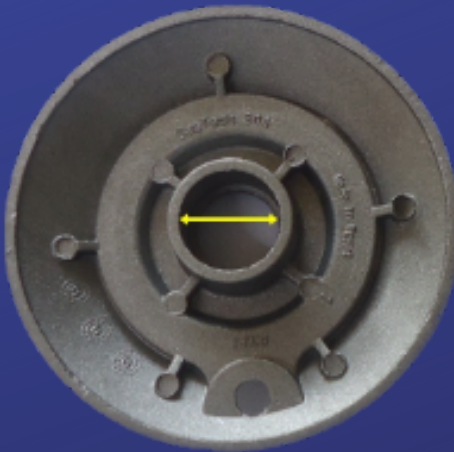
Small Burner



Medium Burner



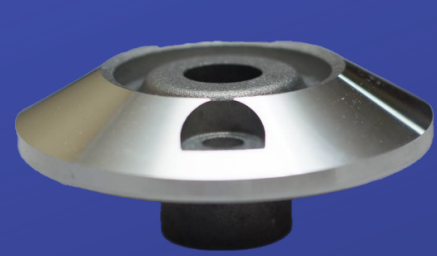
Large Burner



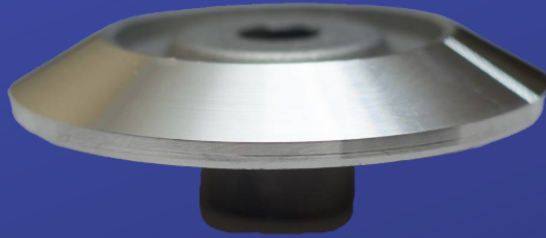
### Flat Burner set

The flame spreader which connecting and fixing on venturi gas system and assembly with brass cap, with a wide varieties dimensions of gas inlet hole **according to customer requirements** [position referred to in photo]

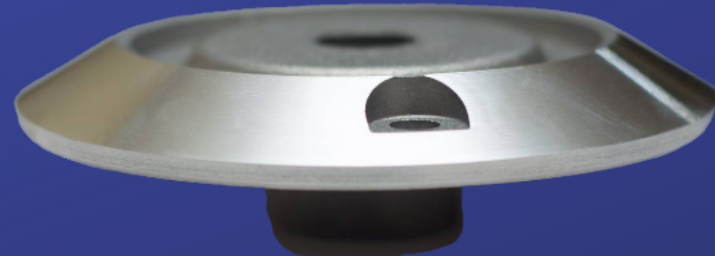
## 1.4.1- Flat Burner set \_ Long neck



Small Burner



Medium Burner



Large Burner

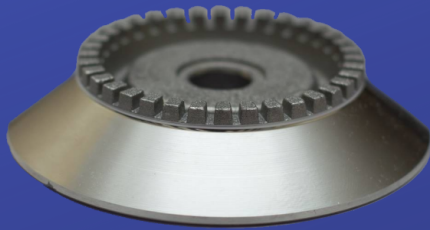


Gas inlet hole height and inner diameter referred to  
(Customized)

# 1.5 - Toothed Burner set



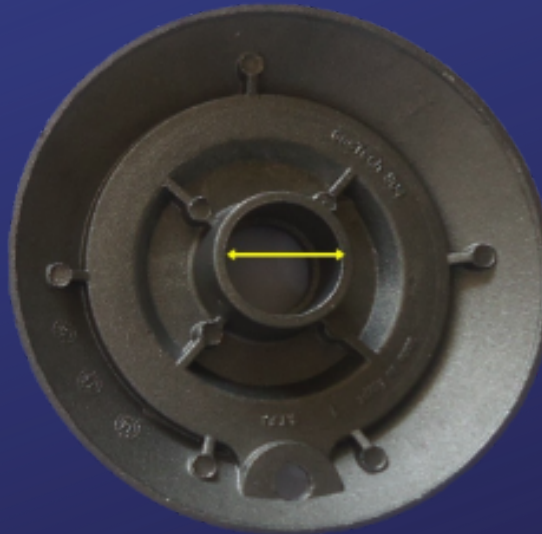
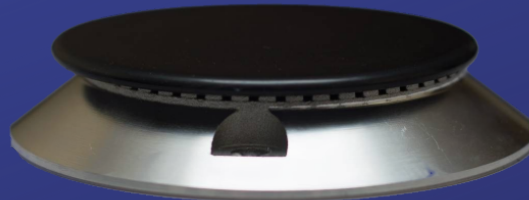
Small Burner



Medium Burner



Large Burner



## Toothed Burner set

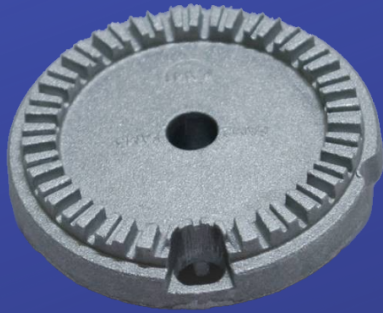
The flame spreader which connecting and fixing on venturi gas system and assembly with metal cap (Glossy & matt painting finish) with a wide varieties dimensions of gas inlet hole **according to customer requirements** [position referred to in photo]



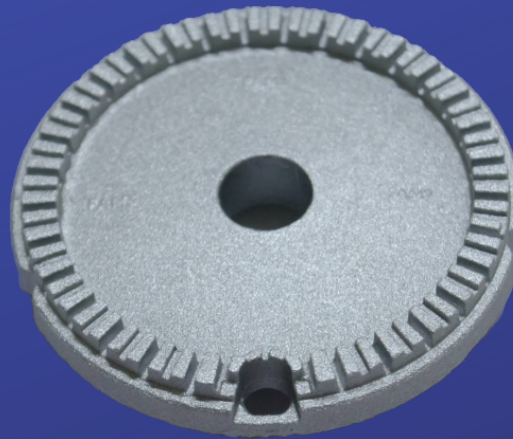
1.6 \_ Alex Burner set



Auxiliary Crown



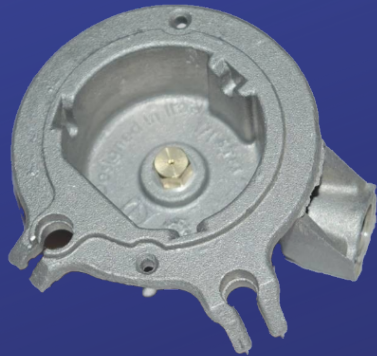
Semi-rapid Crown



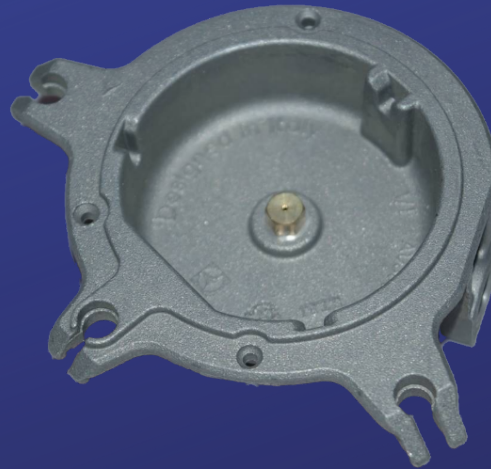
Rapid Crown



Auxiliary Body



Semi-rapid Body



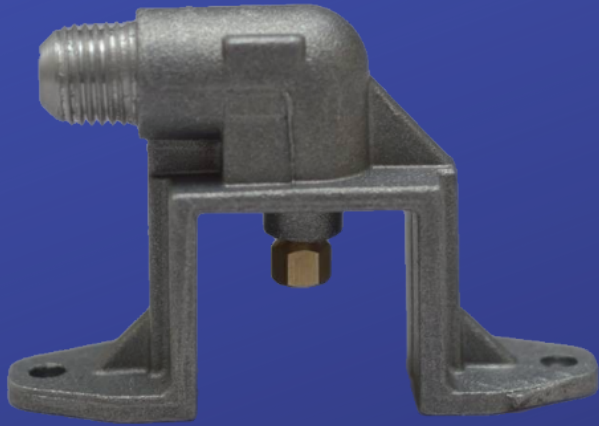
Rapid Body



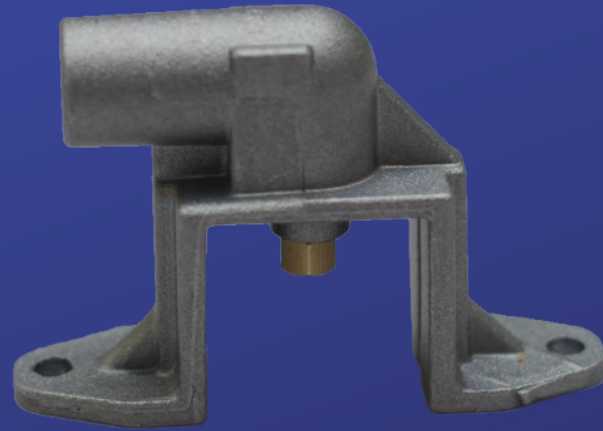
**Assembly Alex Burner set**



## 1.7 \_ Oven & Grill gas components



Injector Support \_Exterior connection



Injector Support \_Interior connection



Nozzle Holder\_M16 × M8



Nozzle Holder\_M13 × M6

## 1.8\_ Fixation components



### **Pan lid hinge BASE**

The base which fix the pan lid (Glass) hinge with cooker body since we produce it with two finishing way [Sand-blasting & Tumbling finish]



## 2- Oven door Hinges

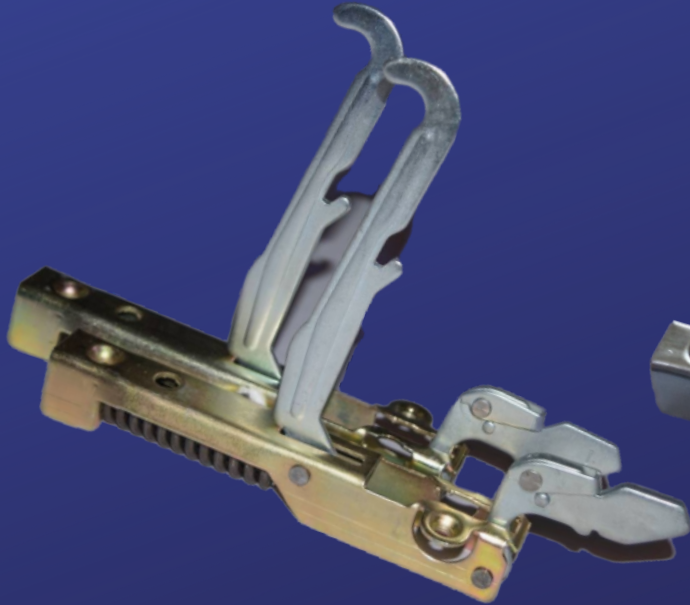
### 2.1 \_ Oven door hinges \_ main



Double fixation oven door hinge



Double flat fixation oven door hinge



Right & left fixation oven door hinge



Double fixation oven door hinge

### 2.2 \_ Drop down door hinges

